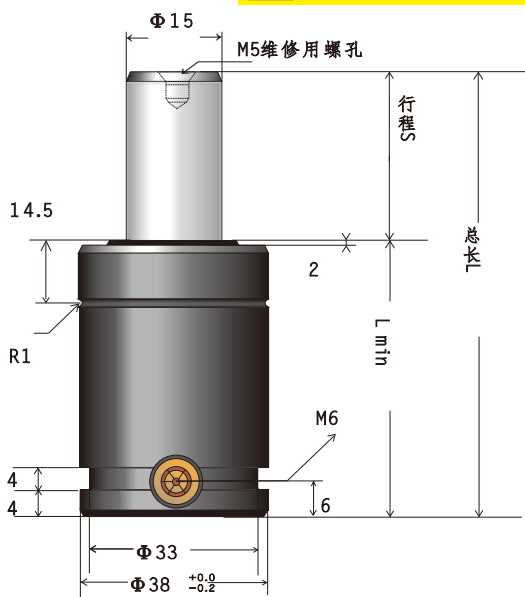
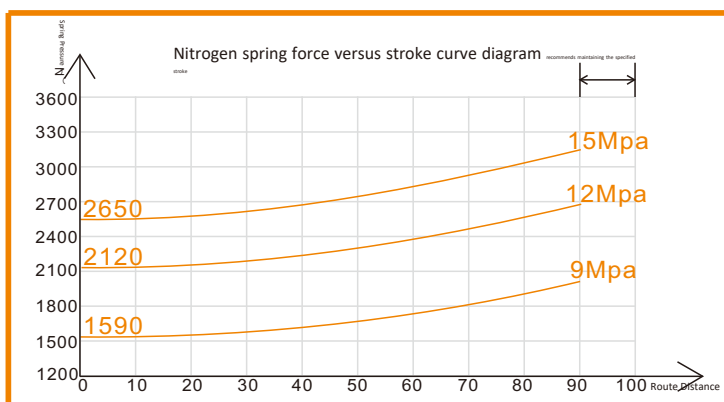
 It is prohibited to use the front-end process hole (M) for securing or installing extension pins.



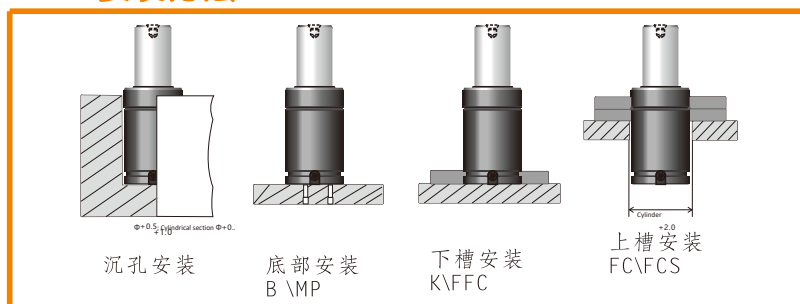
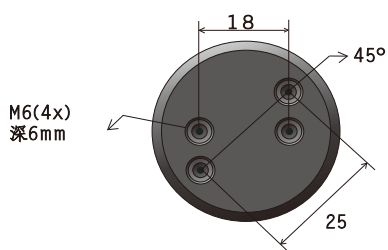
ISO Standard Type/Compact Nitrogen Spring

Basic Technical Parameters

Nominal burst pressure: 2500 N
 Maximum inflation pressure: 15 MPa
 Minimum inflation pressure: 9 MPa
 Maximum operating speed: ≤ 1.2 m/s
 Working medium: Nitrogen (N₂)
 Operating temperature range: -20 to +80°C;
 Temperature-pressure change rate per unit: ± 0.3%/°C;
 Recommended operating frequency: 6 to 50 cycles/min



安装方法:



Specifications and models	Total journey length: L Min		
★BKB2.5-010-070	10	70	60
★BKB2.5-013-076	13	76	63
★BKB2.5-016-082	16	82	67
★BKB2.5-020-090	20	90	70
★BKB2.5-025-100	25	100	75
BKB2.5-038-126	38	126	88
BKB2.5-050-150	50	150	100
BKB2.5-064-177	63.5	177	113.5
BKB2.5-080-210	80	210	130
★BKB2.5-090-230	90	230	140
BKB2.5-100-250	100	250	150
BKB2.5-125-300	125	300	175

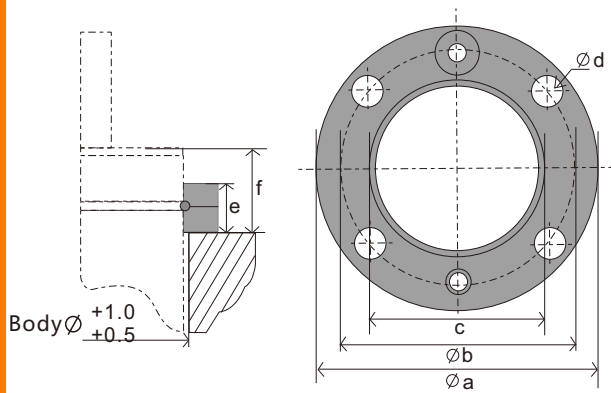
Specifications and models	Total journey length: L Min		
★BKJ2.5-010-0600	60		50
★BKJ2.5-013-0603	66		53
★BKJ2.5-015-0705	70		55
★BKJ2.5-020-0800	80		60
★BKJ2.5-025-0900	90		65
★BKJ2.5-038-1160	116		78
★BKJ2.5-050-14050	140		90
★BKJ2.5-064-167	63.5	167	103.5
★BKJ2.5-080-2000	200		120
★BKJ2.5-090-2200	220		130
★BKJ2.5-100-24000	240		140
★BKJ2.5-125-29025	290		165

Note: Models marked with "★" are infrequently used or non-standard products. Please select them when ordering.

BKB/J2.5 Series Flanges

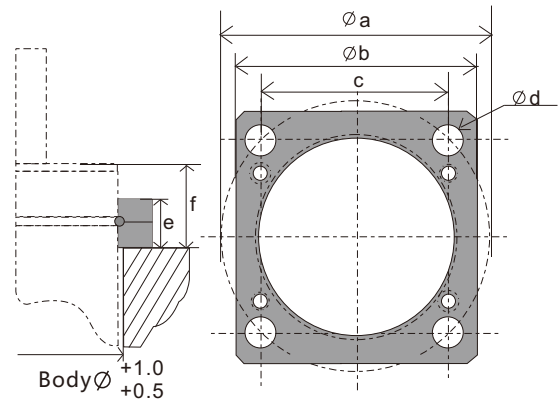
BBK - JINGBA
Mold nitrogen spring

FC



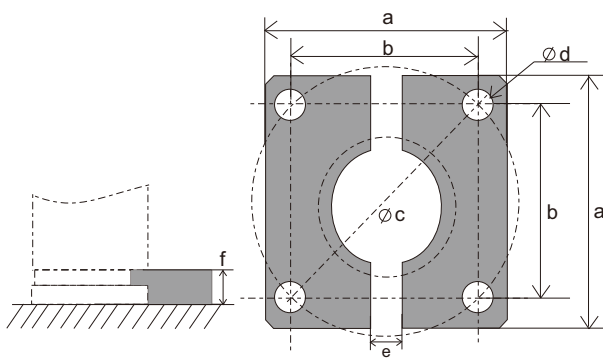
Order No	Ø a	Ø b	c	d	Ø e	f
FC-250	68	56.5	40	7	9	17

FCS



Order No	Ø a	Ø b	c	d	Ø e	f
FCS-250	56.5	52	40	7	9	17

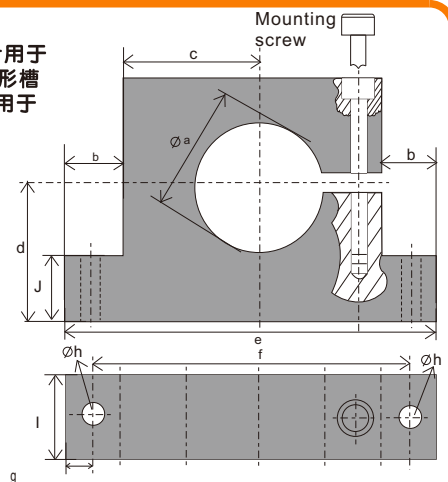
FFC



Order No	a	b	Ø c	Ø d	e	f
FFC-250	55	40	56.6	7	12	6.5

注意! S支架设计用于
搭配安装在U或C形槽
中的法兰使用或用于
B安装选项

应将安装螺钉
(M6)拧紧至
25Nm扭矩。



Order No	Ø a	b	c	d	e	f	g	Ø h	i	J
S-250	38.1	18	24	27.5	95	77	8	9	20	15